

Elizabethan Theatre

(Macbeth)

Tier 2 Vocabulary

Conventions/Key Features

Organisation
 Assessment
 Collaboration
 Participation
 Devising
 Interrelationships
 Spontaneous
 Prepared
 Evaluate
 Linking
 Interaction
 Improvise
 Listening
 Discussion
 Develop

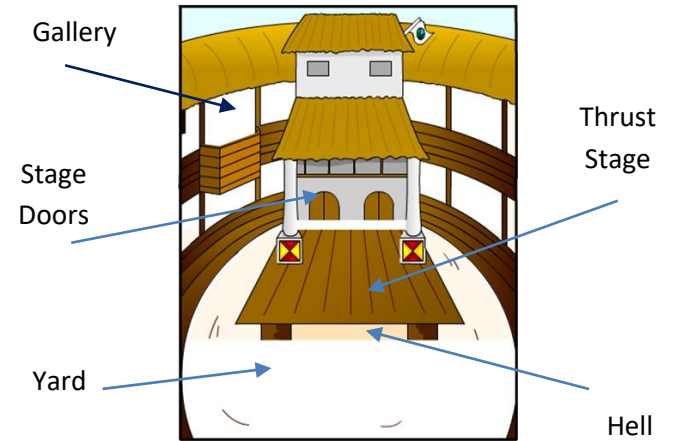
Tier 3 Vocabulary

Facial Expressions
 Stance
 Gestures
 Stock Characters
 Body Language
 Still Image
 Staging
 Elizabethan
 Shakespeare
 Subtext
 Thought-Tracking
 Narration
 Dialogue
 Theatre
 Freeze Frame
 End On
 In the Round
 Thrust Staging

Elizabethan Theatre Key Facts

- Queen Elizabeth reigned from 1558 – 1603.
- Queen Elizabeth was very supportive of the theatre.
- Theatre was heavily governed by the monarchy – they set laws of what could be performed and who could perform it.
- The two main theatre companies of the time were; The Lord Chamberlain's Men and The Lord Admiral's Men.
- William Shakespeare was a famous Elizabethan playwright. He wrote 37 plays and 154 sonnets.
- Richard Burbage was an Elizabethan actor and member of The Lord Chamberlains Men.

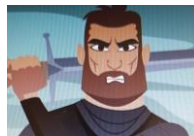
The Globe Theatre



Elizabethan Theatre Key Facts

- The original Globe Theatre was built in 1599.
- Audience members who stood in the 'yard' were called Groundlings, and paid 1 penny for their tickets.
- Female roles were played by young boys as women were not allowed to be actors at that time.
- Plays could only be performed during the day as there was no electricity for lighting.
- Colour coded flags were used outside the theatre to advertise the type of play to be performed: Red for a history play, white for a comedy play and black for a tragedy play.

Macbeth Key Characters



Macbeth



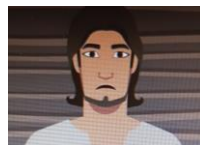
Banquo



Lady
Macbeth



King
Duncan



Malcolm



Macduff



Three
Witches