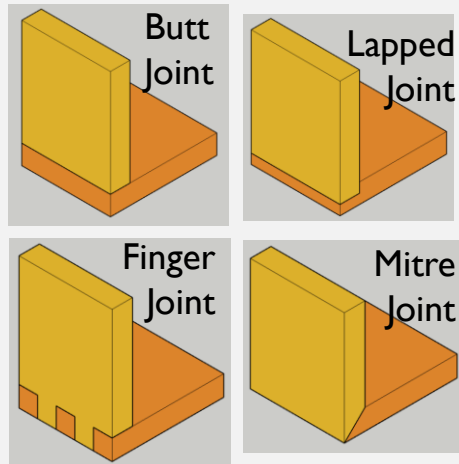


YEAR 9 – LAMINATED TIMBER CLOCK BOX

Stock forms for timber based materials



Basic Wood Joints



Type of (standard) Component	Description and Use
Nails	Made from Mild Steel Mostly used where appearance isn't important
Panel and Veneer Pins	Made from Mild Steel Used to fix backs into cupboards Veneer pins are finer and thinner
Wood screws	They are used to join metal or plastic components to wood, or to join two pieces of wood to make a strong joint
(Nuts & Bolts)	They have a screw thread which fits into a threaded hole or a hexagonal nut, and are normally used to join two or more pieces of metal or plastic A bolt is only threaded for part of its length Bolts normally have hexagonal heads
Hinges and catches	They are used on boxes, cabinets and cupboards They can be used on products made from wood, metal or plastic They are normally fixed to the product with wood screws or machine screws and nuts

Scales of Production

One-off production - single custom made product/prototype



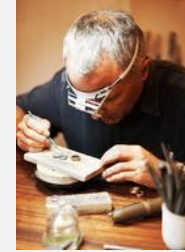
Batch Production - set number quantity of products



Mass production - large volume of identical products



Continuous production - high volume produced 24/7



Process: Hand polishing Acrylic

Cross Filing

Draw filing

Sanding with gradually finer grit wet and dry (600, 800, 1200)

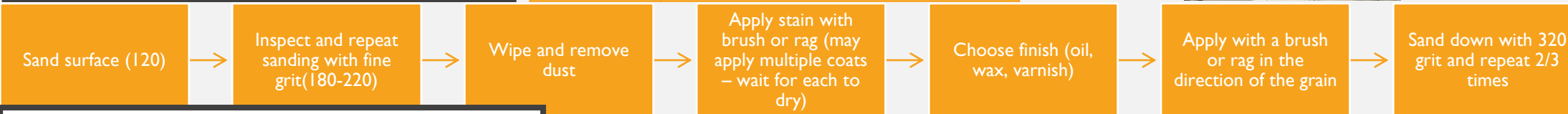
Sand with finest grit wet and dry – use wet

Use a polishing compound (Brasso is used in school)

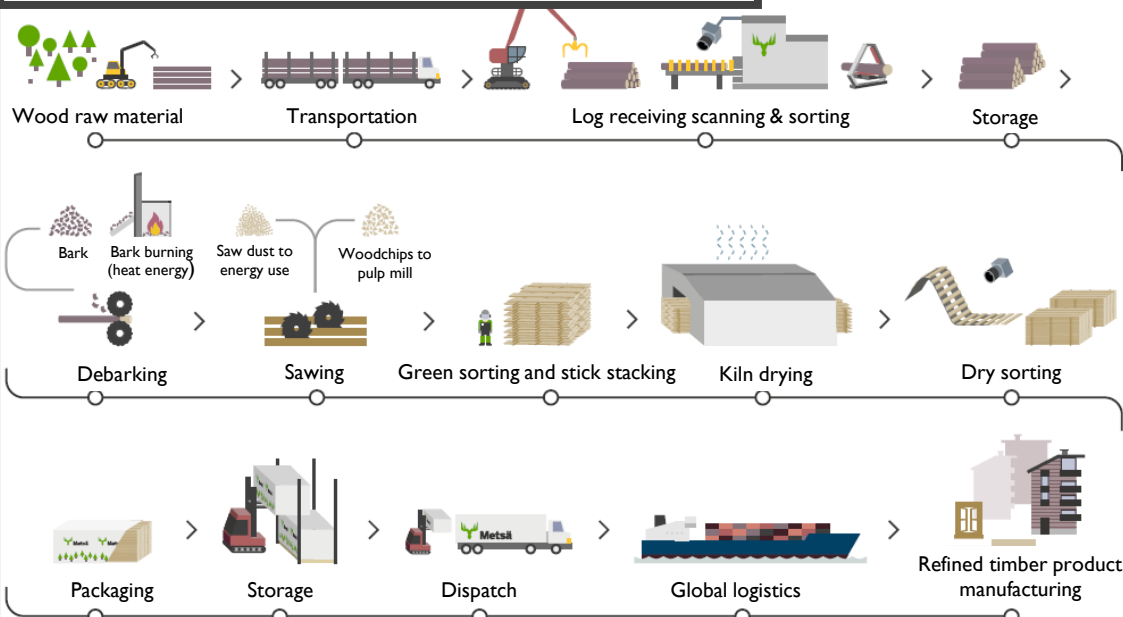
Process: Laminating timber



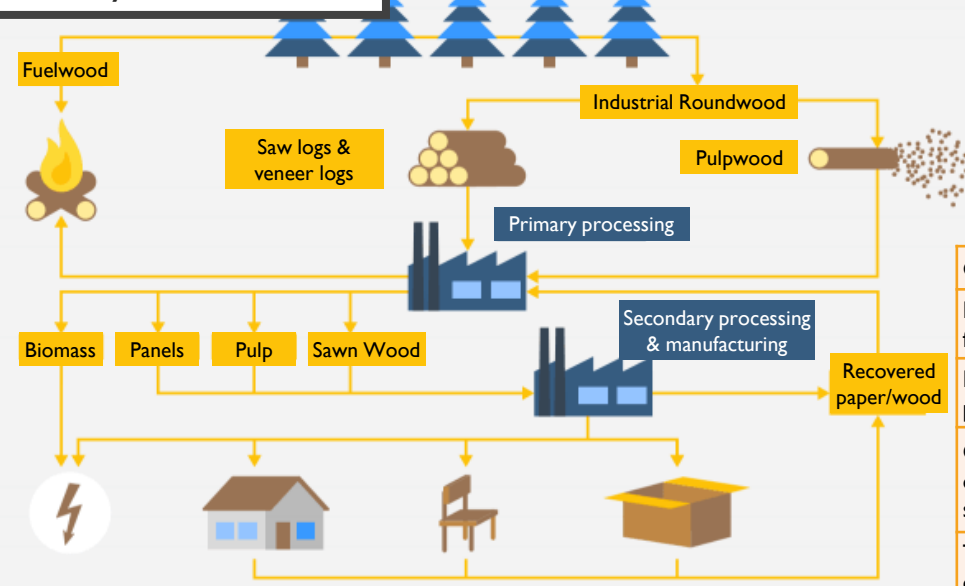
Process: Staining and finishing timber based materials



Sawn Timber Manufacturing Process



Life cycle of timber



Quality control	Quality assurance
Focuses on identifying faulty goods	Focuses on improving the production process
Identifies and fixes problems and faults	Establishes a good system for quality management
Quality is the responsibility of one individual or a specific team of individuals	Quality is the responsibility of everyone involved in the manufacturing process
The product is at the heart of quality control	The production process is at the heart of quality assurance