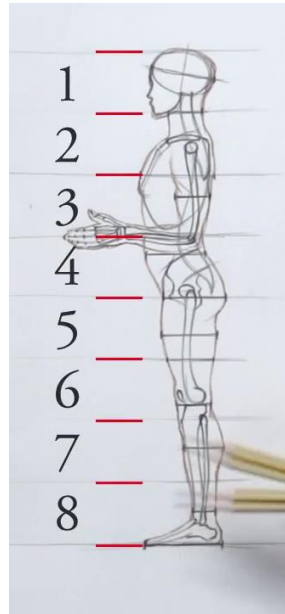


Knowledge Map: Proportions, Shape & Scale

Proportion is the relationship of the size of one element when compared to another.



Scale

For example to make an object appear small we can...

- ... make our drawing small
- ... position the object in the bottom corner
- ... leave lots of white space around the object
- ... draw it from a bird's eye viewpoint, if we are looking down at the object that must mean that we are big and the object is small.



Shape

A shape is an area enclosed by a line. It could be just an outline, or it could be filled in.

A shape with no tone is flat.

When we add tone to create a 3D effect, we must follow the direction of line of the object; also known as contouring.



If you **elongate** something or if it **elongates**, you stretch it so that it becomes longer.

Changing the scale of an object can help imply the emphasis of its importance.



Vivienne Westwood



Henri Matisse



Forced perspective is a technique that employs optical illusion to make an object appear further away, closer, larger or smaller than it actually is.