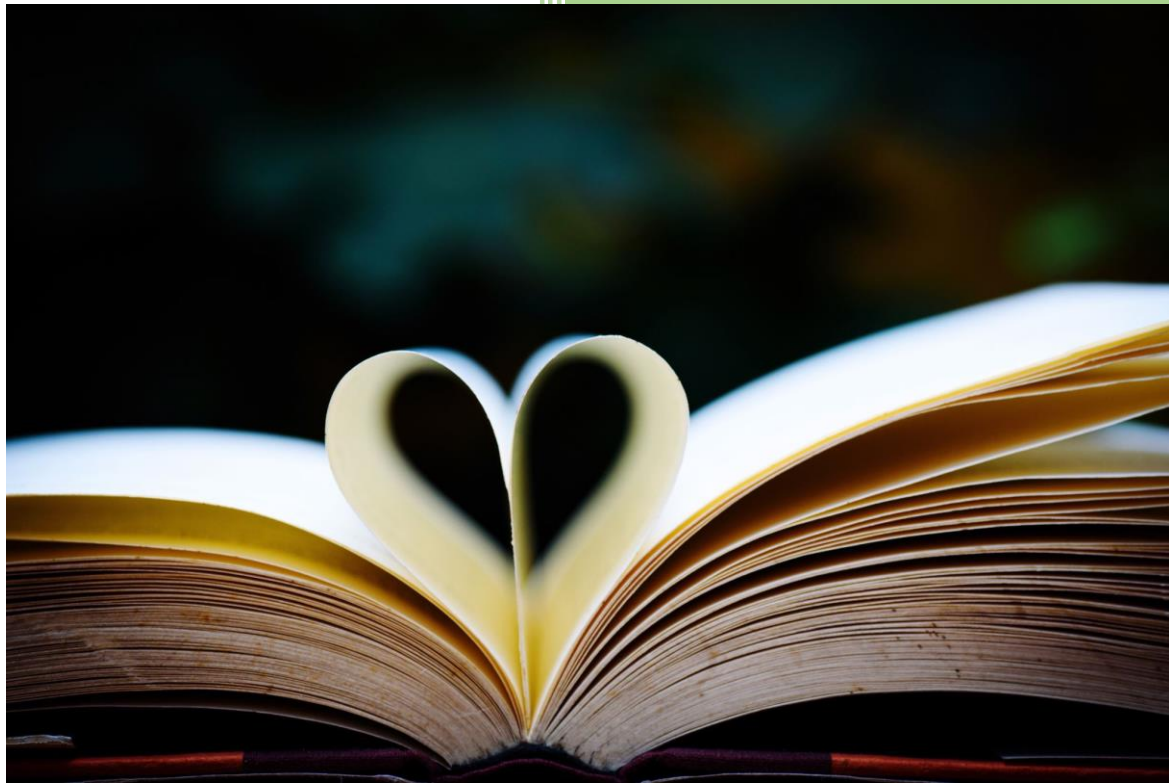


GCSE DANCE

GLOSSARY AND COMMAND WORDS



AQA SUBJECT SPECIFIC VOCABULARY

Accessory

PRODUCTION FEATURE

An additional item of costume, for example gloves.

Actions

TECHNICAL SKILL

What a dancer does eg travelling, turning, elevation, gesture, stillness, use of body parts, floor-work and the transference of weight.

Acceleration

DYNAMIC

Speeding up the movement.

Accompaniment

AURAL SETTING

The sound that you hear during a dance. For example, percussion.

Accumulation

RELATIONSHIP

When a dancer performs a series of movements and others join in at different times until all perform in unison.

Air pattern

SPACE

A design that is traced in the air by part of the body.

Alignment

PHYSICAL SKILL

Correct placement of body parts in relation to each other.

Appreciation

Recognition and understanding of the qualities of dance.

Artistic intention

EXPRESSIVE SKILL

The aim of a dance; what the choreographer aims to communicate.

Artistry

Creative skill.

Auditory

Relating to sound.

Aural setting

PRODUCTION FEATURE

An audible accompaniment to the dance such as music, words, song and natural sound (or silence).

Balance

PHYSICAL SKILL

A steady or held position achieved by an even distribution of weight.

Binary

STRUCTURE

A composition in two parts or sections.

Canon

CHOREOGRAPHIC DEVICE

When the same movements overlap in time.

Choreographic approach

The way in which a choreographer makes the dance.

Choreographic devices

Methods used to develop and vary material.

Choreographic intention

The aim of the dance; what the choreographer aims to communicate.

Choreographic principles

CONSTITUENT FEATURE

Activities involved in creating dance.

Choreographic processes

Activities involved in creating dance such as improvisation, selection and development.

Choreography

The art of creating dance.

Climax

CHOREOGRAPHIC DEVICE

The most significant moment of the dance.

Complementary

RELATIONSHIP

Perform actions or shapes that are similar to but not exactly the same as another dancer's.

Constituent features

Characteristics of choreography such as style, stimulus, subject matter, number/gender of dancers, action

content, choreographic principles, form and structure, physical and aural settings.

Complementary/Contrast

RELATIONSHIP

Movements or shapes that have nothing in common.

Contrast

CHOREOGRAPHIC DEVICE

Movements or shapes that have nothing in common.

Control

PHYSICAL SKILL

The ability to start and stop movement, change direction and hold a shape efficiently.

Coordination

PHYSICAL SKILL

The efficient combination of body parts.

Costume

PRODUCTION FEATURE

Clothing worn by dancers in performance.

Counterpoint

RELATIONSHIP

When dancers perform different phrases simultaneously.

Critical appreciation

Evaluation of dance based upon knowledge and understanding, including original insights.

Dance film

PRODUCTION FEATURE

Where dance and film are both integral to a work; this includes documentary, animation, dance for camera and a screen adaptation of a stage work.

Dance for camera

PRODUCTION FEATURE

Where the choreographer collaborates with (or is) the film-maker; where the intention is to produce a dance work in a multi-media form that cannot be achieved in live performance.

Dancewear

What the dancer wears for class and rehearsal.

Deceleration

DYNAMIC

Slowing down the movement.

Development

The way in which movement material is manipulated.

Direction

SPACE

The facing of a movement.

Duet

Two performers.

Dynamics

TECHNICAL SKILL

The qualities of movement based upon variations in speed, strength and flow.

Elements of dance

TECHNICAL

SKILL

Actions, space, dynamics and relationships.

Elevation

ACTION

The action of 'going up' without support, such as in a jump.

End-stage

PERFORMANCE ENVIRONMENT

A performance space with the audience on one side; also known as 'end-on'.

Episodic

STRUCTURE

A choreography with several sections, linked by a theme.

Execution

Carrying out actions with the required intention.

Expressive skills

Aspects that contribute to performance artistry and that engage the audience, such as focus and musicality.

Extension

PHYSICAL SKILL

Lengthening one or more muscles or limbs.

Facial expression

EXPRESSIVE SKILL

Use of the face to show mood, feeling or character.

Features of production

Lighting, set, properties, costume and aural setting.

Flexibility

PHYSICAL SKILL

The range of movement in the joints (involving muscles, tendons and ligaments).

Focus (use of)

EXPRESSIVE SKILL

Use of the eyes to enhance performance or interpretative qualities.

Form

CONSTITUENT FEATURE

The overall shape and structure of a dance.

Formations

RELATIONSHIP

Shapes or patterns created in space by dancers.

Fragmentation

MOTIF DEVELOPMENT

Use of parts of a phrase or motif.

Highlights

CHOREOGRAPHIC DEVICE

Important moments of a dance.

Ideational

Relating to ideas or concepts.

Improvisation

CHOREOGRAPHIC STYLE

Exploration or generation of movements without planning.

In-the-round

PERFORMANCE ENVIRONMENT

A performing area with the audience seated on all sides.

Intention

Aim or desired outcome.

Interpretation

Finding the meaning that is in the movement or finding the movement that is in the idea.

Isolation

PHYSICAL SKILL

An independent movement of part of the body.

Kinaesthetic

Sensory perception (or awareness) of movement and position.

Levels

SPACE

Distance from the ground: low, medium or high.

Lighting

PRODUCTION FEATURE

The illumination of the performance area.

Logical sequence
STRUCTURE

The flow of phrases or sections of a dance.

Manipulation of number
**CHORE
DEVICE**

How the number of dancers in a group is used.

Mental rehearsal
MENTAL SKILL

Thinking through or visualising the dance.

Mental skills

These include commitment, concentration, confidence, movement memory, systematic repetition, mental rehearsal, rehearsal discipline, planning of rehearsal, response to feedback and capacity to improve.

Mobility
PHYSICAL SKILL

The range of movement in a joint; the ability to move fluently from action to action.

Motif
CHOREOGRAPHIC DEVICE

A movement phrase encapsulating an idea that is repeated and developed throughout the dance.

Motif development
CHOREOGRAPHIC DEVICE

Ways in which a movement phrase can be varied.

Movement in a stylistically accurate way
TECHNICAL SKILL

Movements and actions relating to genre

Movement material
CHOREOGRAPHIC DEVICE

The matter of dance: actions, space, dynamics and relationships.

Movement memory
MENTAL SKILL / CONS FEAT

The automatic recall of learned movement material, without conscious thought.

Musicality
EXPRESSIVE SKILL

The ability to make the unique qualities of the accompaniment evident in performance.

Narrative
STRUCTURE

Dance that tells a story.

Pathways
SPACE

Designs traced in space (on the floor or in the air).

Patterns (spatial)
SPACE

A repeated design traced in space (on the floor or in the air).

Performance

The presentation of dance to an audience.

Performance (personal)

Acquisition and development of physical and expressive skills.

Performance environments

Different settings for dance such as in-the-round, proscenium and site-sensitive.

Phrase

A short sequence of linked movements.

Phrasing

EXPRESSIVE SKILL

The way in which the energy is distributed in the execution of a movement phrase.

Physical skills

Aspects enabling effective performance such as posture, alignment, balance, coordination, control, flexibility, mobility, strength, stamina, extension and isolation.

Posture

PHYSICAL SKILL

The way the body is held.

Professional work

Original choreography by an individual or company that is recognised nationally or internationally.

Projection

EXPRESSIVE SKILL

The energy the dancer uses to connect with and draw in the audience.

Prop/property

PRODUCTION FEATURE

A portable object that is used in a dance, for example a suitcase.

Proscenium

PERFORMANCE ENVIRONMENT

The arch or opening that creates the effect of a picture frame and separates the stage from the auditorium.

Rehearsal discipline

MENTAL SKILL

Attributes and skills required for refining performance such as commitment, systematic repetition, teamwork, responsibility and effective use of time.

Relationships

TECHNICAL SKILL

The ways in which dancers interact; the connections between dancers.

Repetition

CHOREOGRAPHIC DEVICE

Performing the same action or phrase again.

Retrograde

MOTIF DEVELOPMENT

Reversing a movement phrase.

Rhythmic content

TECHNICAL SKILL

Repeated patterns of sound or movement.

Rondo

STRUCTURE

A music or dance form with alternating and repeating sections eg verse and chorus.

Safe execution

Carrying out actions safely.

Safe working practice

Personal care, respect for others, safe execution and preparation and recovery from dancing.

Sensitivity to other dancers

EXPRESSIVE SKILL

Awareness of and connection to other dancers.

Site sensitive

PERFORMANCE ENVIRONMENT

Dances that are designed for (or relate to) non-theatre spaces.

Solo

One performer.

Space

TECHNICAL SKILL

The 'where' of movement such as levels, directions, pathways, shapes, designs and patterns.

Spatial awareness

EXPRESSIVE SKILL

Consciousness of the surrounding space and its effective use.

Spatial design

SPACE

The way that elements of space have been considered, utilised and designed (can be personal space and general space).

Staging/set

STRUCTURE

The presentation of dance in the performing space including set, furniture, props, projection and backdrop.

Stamina

PHYSICAL SKILL

Ability to maintain physical and mental energy over periods of time.

Stimulus/stimuli

CONSTITUENT FEATURE

Inspiration for an idea or movement.

Strength

PHYSICAL SKILL

Muscular power.

Structure

CONSTITUENT FEATURE

The way in which material is organised to create the whole.

Structuring devices

The ways in which a dance is made, built, ordered or organised.

Style

CONSTITUENT FEATURE

Characteristic way of dancing.

Style fusion **Communication of choreographic intent**

The combination of features of two or more styles.

Systematic repetition
MENTAL SKILL

Repeating something in an arranged or ordered way.

Tactile

Relating to the sense of touch.

Technical skills

These include accuracy of action, timing, dynamic, rhythmic and spatial content and the reproduction of movement in a stylistically accurate way.

Ternary

STRUCTURE

A composition in three parts.

Timing

TECHNICAL SKILL

The use of time or counts when matching movements to sound and/or other dancers.

Transitions

STRUCTURE

Links between dance phrases or sections.

Unison

CHOREOGRAPHIC DEVICE

Two or more dancers performing the same movement at the same time.

Unity

STRUCTURE

A sense of 'wholeness' or harmony.

Visual

Relating to sight.

AQA COMMAND WORDS

Command words are the words and phrases used in exams and other assessment tasks that tell students how they should answer the question.

Define

Specify the meaning of something

Describe

Set out characteristics of something

Discuss

Present key points (detailed writing considering different ideas, characteristics and/or features)

Explain

Set out purposes or reasons

Give

Produce an answer from recall

Identify

Name or otherwise characterise

Name

Identify correctly

Outline

Set out main characteristics

Tick

Put a mark to indicate something is correct

What

Specify something

Which

Specify from a range of possibilities